



# SPECIFICATIONS

HOT WATER DISPENSER

## SO-3004



**Power:** 110V, 60 Hz

**Heating system:** 750W

**Current:** 6.8 A

**Thermostat:** Preadjusted

**Heating temperature:** 194°F ~ 205°F

**Tank capacity:** 1.1 gallons

**Heating capacity:** 2.1 gallons / hour

**Dimensions: W x D x H (inches):** 7 3/32" x 9 29/64" x 15 23/64" - 17 21/64" (with fittings)

**Weight:** 13,2 lbs

**Water inlet diameter:** 1/4" NPT female

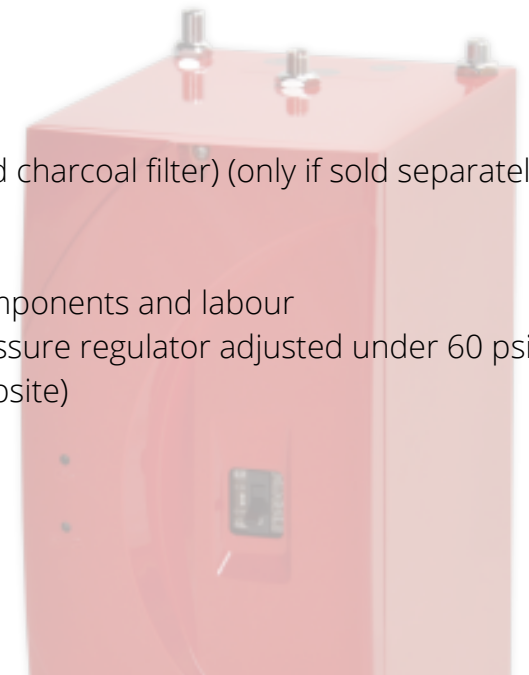
**Water outlet diameter:** 1/4" NPT male

**Power cord length:** 71"

**Material of body:** Plastic & metal

### Source Omega's advantages

- Triple filtration system (Sediment, softener and charcoal filter) (only if sold separately)
- Water leak detector
- Stainless steel tank
- Conditional warranty of 7 years on cooling components and labour
- Must be installed with a leak detector and pressure regulator adjusted under 60 psi (see the conditions of our warranty on our website)



# PARTS

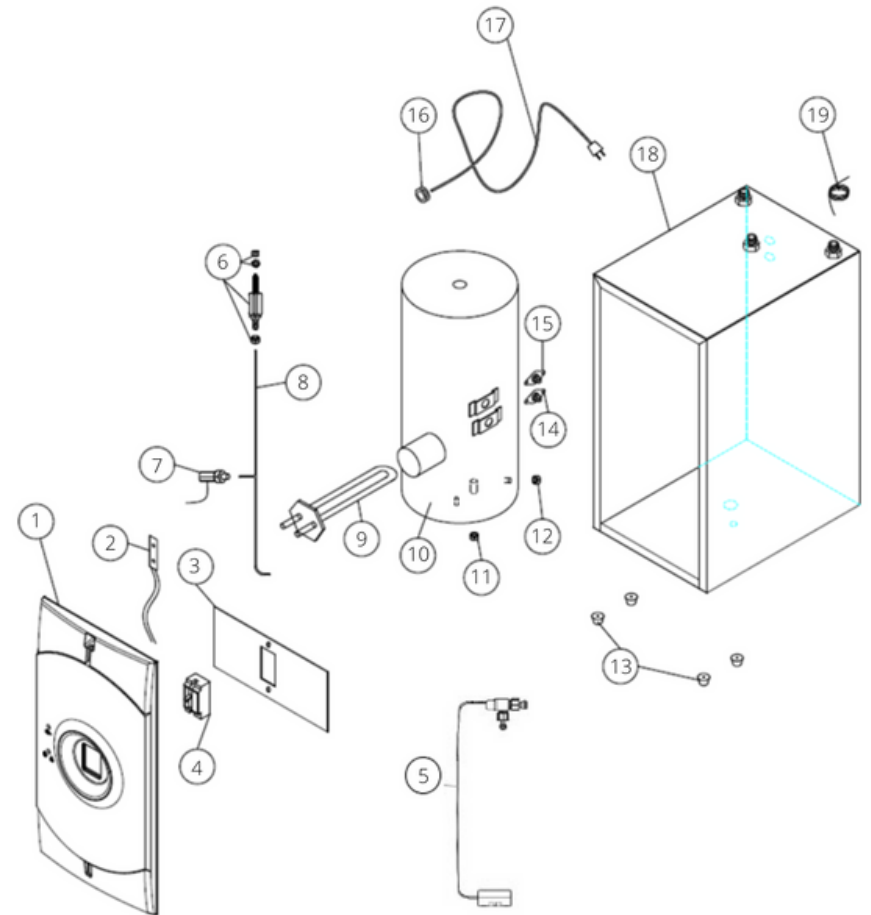
## HOT WATER DISPENSER

# SO-3004



### Parts

1. Front panel
2. Indicator light
3. Indicator light holder
4. Circuit breaker
5. Water leak detector
6. Check valve
7. Pressure release valve
8. Copper tube
9. Heating element
10. Tank
11. Copper plug
12. Nut
13. Rubber feet
14. Hot water control 95°C
15. Hot water control 100°C
16. Power protector
17. Power cord
18. Frame
19. Capillary tube





**HOT WATER DISPENSER**

**SO-3004**



**Hole alignment for faucet**

The hole must be 1/2" in diameter.

