



SPECIFICATIONS

COLD WATER DISPENSER

SO-318



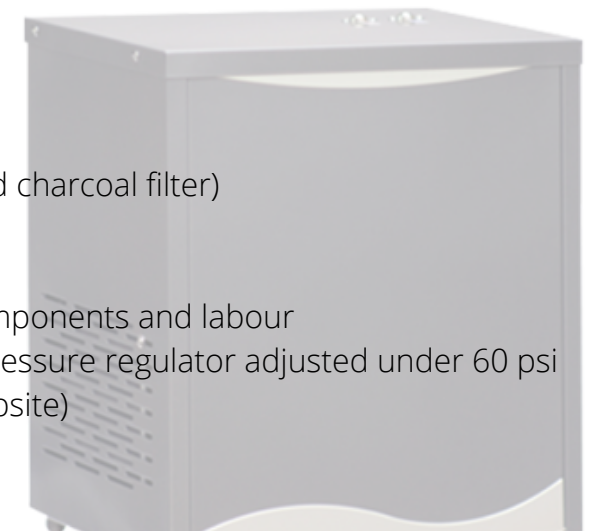
Power: 110V, 60 Hz
Consumption: 350W
Thermostat: Mechanical control
Cooling temperature: 39°F ~ 50°F
Tank capacity: 0.5 gallons
Cooling capacity: 3.4 gallons / hour
Dimensions : W x D x H (inches): 16 29/32" x 12" x 19 11/32"
Weight: 42.8 lbs
Water inlet diameter: 1/4" NPT female
Water outlet diameter: 1/4" NPT female
Power cord length: 47 1/4"
Material of body: Painted steel

Compressor:

Brand: Matsushita (Panasonic)
Capacity: 510 Btu/h
Power: 2.9 A
Fan: 24W
Refrigerant: R134A

Source Omega's advantages

- Triple filtration system (Sediment, softener and charcoal filter)
- Water leak detector
- Stainless steel tank
- Conditional warranty of 7 years on cooling components and labour
- Must be installed with a leak detector and a pressure regulator adjusted under 60 psi (see the conditions of our warranty on our website)

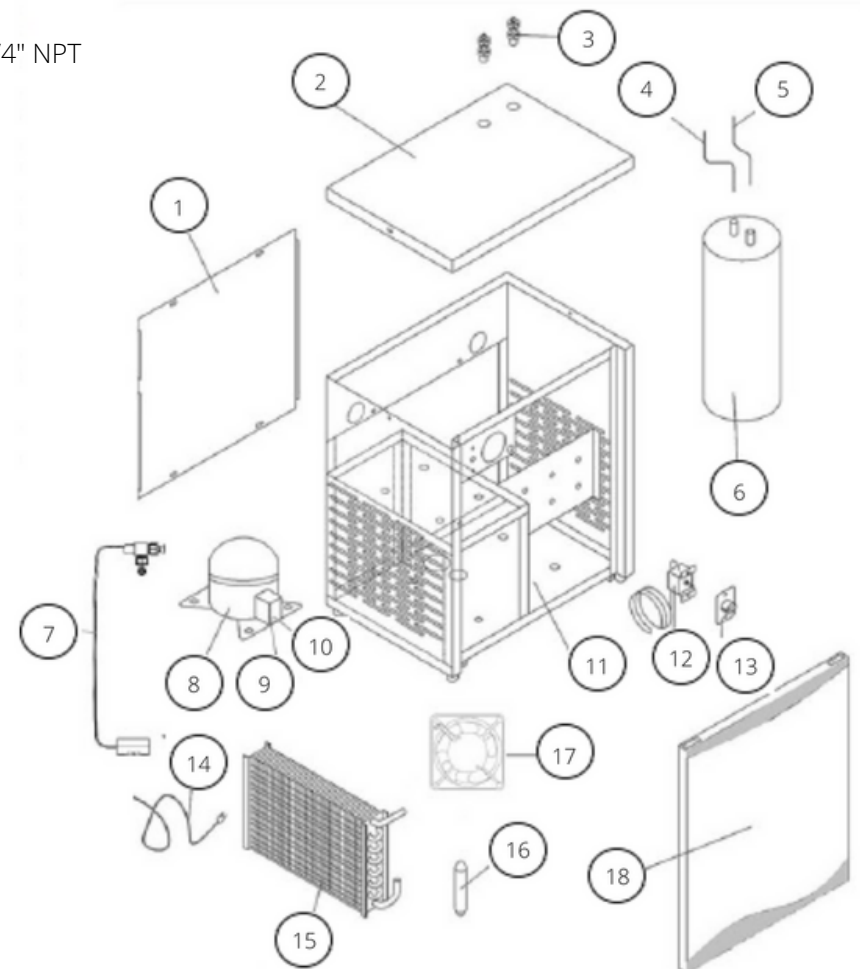


COLD WATER DISPENSER

SO-318

Parts

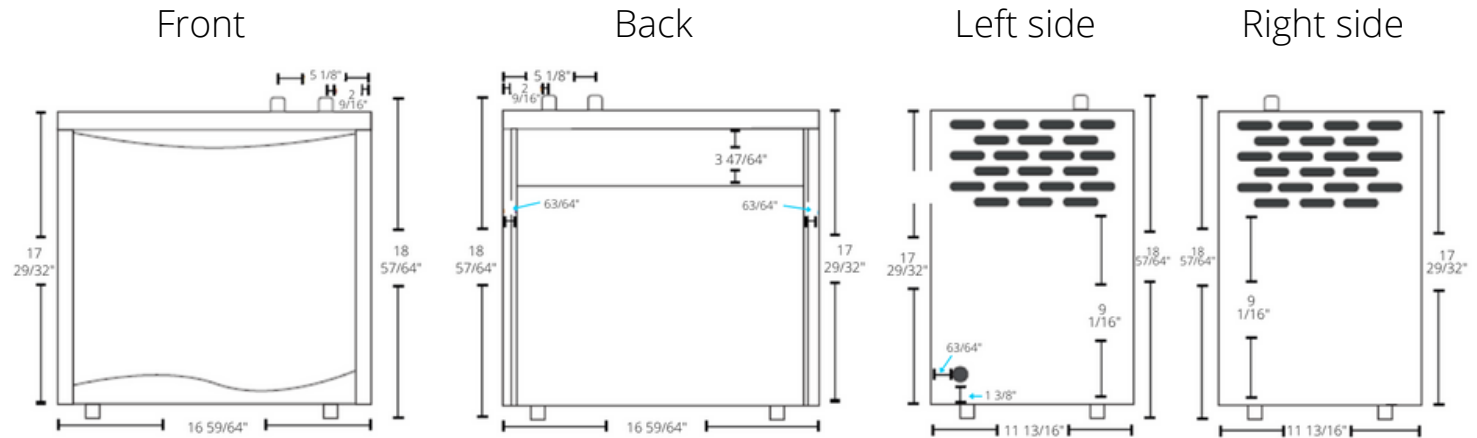
1. Back panel
2. Top cover
3. Water inlet (outlet) connector 1/4" NPT
4. Copper tube (water in)
5. Copper tube (water out)
6. Tank assembly
7. Water leak detector
8. Compressor
9. Compressor relay
10. Compressor overload protector
11. Frame
12. Thermostat
13. Thermostat dial button
14. Power cord
15. Condenser
16. Drier
17. Cooling fan
18. Front panel





**COLD WATER
DISPENSER**

SO-318



Hole alignment for faucet

The hole must be $\frac{1}{2}$ " in diameter.

